

PROCESS INNOVATIONS, INC.

P.O. BOX 25 FOWLER, OH 44418

TEL: 330-856-5192

FAX: 330-394-1122



Model 185 Features

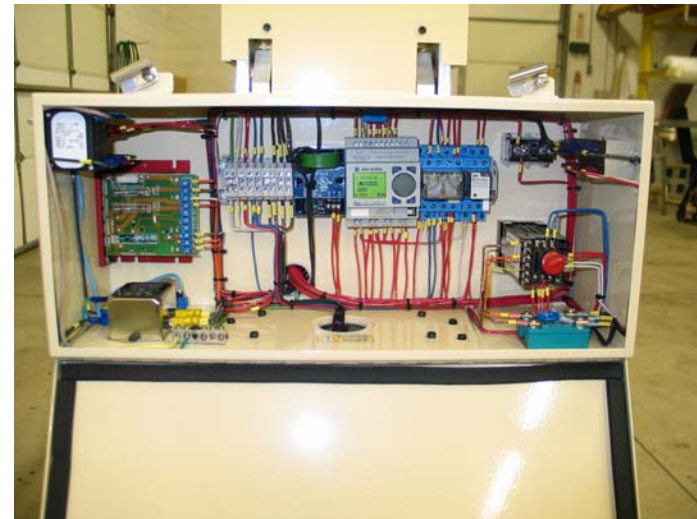
1. Standard unit provided table top mounting
2. PLC Based control system for ease of troubleshooting and system diagnostics.
3. Product inhibit lockout gate to prevent loading of parts when the oven temperature is out of range of set point.
4. "0" Voltage detect circuitry to prevent machine restart after a power outage.
5. Standard unit provided with 3.75" wide 1500 watt elements.
6. Speed fault circuitry to turn the unit off is the motor fails or the speed drops below 0.4 FPM.
7. Front panel operator controls and diagnostic indicator lights.
8. Adjustable speed range of 0.5 to 5.0 FPM.
9. Maintenance pin provide to lock the upper heater chamber in the open position for service.
10. Processing temperature range to 650C.
11. 20 minute solid state cool down timer.
12. E-Stop circuitry for immediate shut-down in a critical condition.
13. Quarter-Turn fasteners for easy removal of side upper sheet metal covers.
14. CE compliant electrical components.
15. **Optional 6" Element kit available for long parts.**
16. **Optional part counter.**
17. **Optional floor stand kit with adjustable height product discharge tray.**
18. **Optional outboard carrier kit for long harnesses requiring support outboard of the heating chamber.**



Model 185 with optional floor stand and Outboard Carriers.



Operator Controls



Plc based control system



Service maintenance pin



Standard 3.75" elements